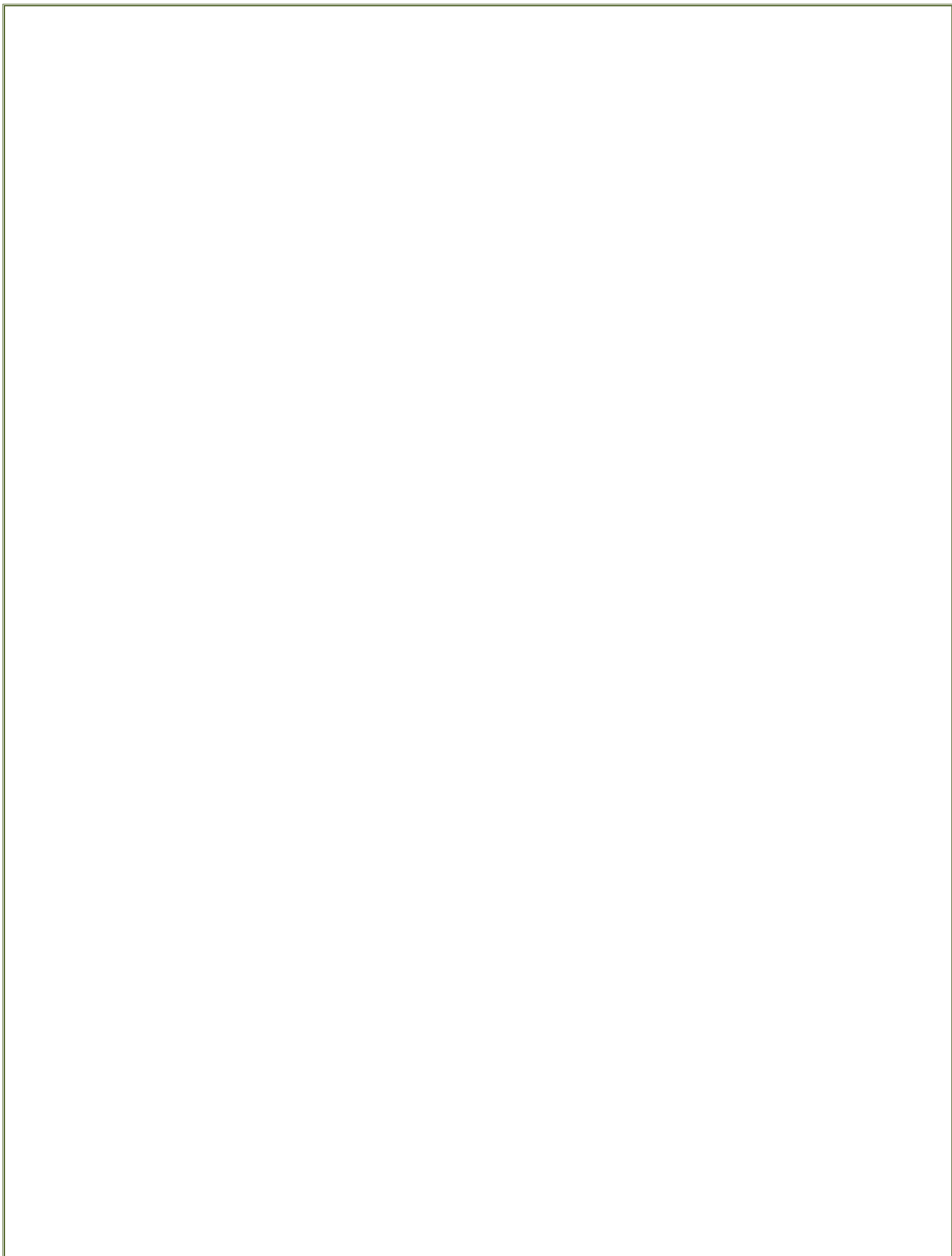




# F.O.K.O.S.

Friends of Kingston Open Space

## A GUIDE TO KINGSTON OPEN SPACE



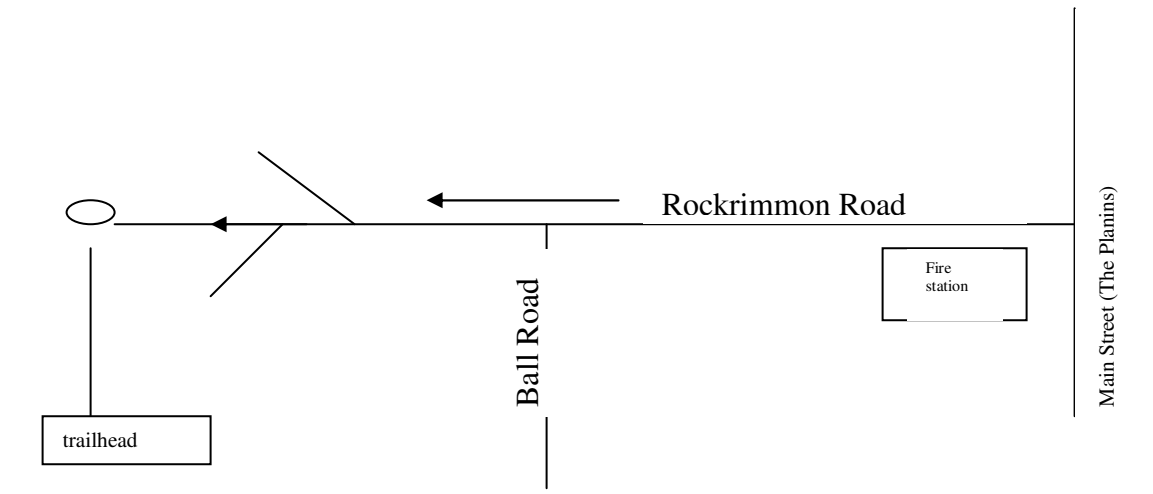
**Friends of Kingston Open Space (FOKOS)** was formed when a handful of concerned citizens joined together to learn what could be done to protect irreplaceable parcels of land in town. Efforts toward this goal include **learning** what needs to be done to begin the process of protecting a given tract of land, and **informing and educating** the community about its location and significance. Following this, legal and financial steps are taken to preserve the parcel of land by the Town of Kingston, through donation, bargain sale, conservation easement, or outright purchase.

The **FOKOS** group has presented information to the community to inform them about the advantages of protecting open space, e.g., lowering property taxes, balancing growth, and preserving the quality of life in Kingston. In part because of the efforts of **FOKOS**, the town voted to set up a Conservation Land Acquisition Trust Fund and has purchased land and conservation easement on properties in town.

If preserving open space for the benefit of future generations, saving tax dollars, and protecting Kingston's quality of life are important to you, please leave your name, address, and phone number to be included on our mailing list.

Thank you.

## Rockrimmon Tower Ledge



Directions to Rockrimmon Tower Ledge (approximate walking time: 30 to 40 minutes each way):

Wear a comfortable pair of walking shoes and share in the beauty of the state park on tope of the hill. To get there:

- From the Plains on Main Street in Kingston, turn onto Rockrimmon Road at the Fire Station
- Walk a mile to where Rockrimmon Road becomes unpaved. Stay straight on the unpaved roadway (the paved portion is Ball Road, which continues to the left)
- After 1/10<sup>th</sup> of a mile, you'll see a large diamond shaped "Tree Farm" sign on your left. Directly across the road is a cleared pull-off area where you may leave your car.
- Continue walking down the hill until you pass a red house on your right. Just past this house is a fork. Take the **left** at this fork to stay on the main road.
- You'll pass two more houses on your right as well as a "Class VI" road sign. Continue to the bottom of the next hill where there's a second fork. Take the **right** at this fork and ascend a steep incline.
- When you reach a gravel turnout on your left, you'll begin to see trail markings. Follow these markings to the dirt road.
- The road ascends, bringing you to the top of the hill. Sit on the gently sloping granite ledge to see the panorama – you and your family will want to return often to this beautiful, peaceful spot.

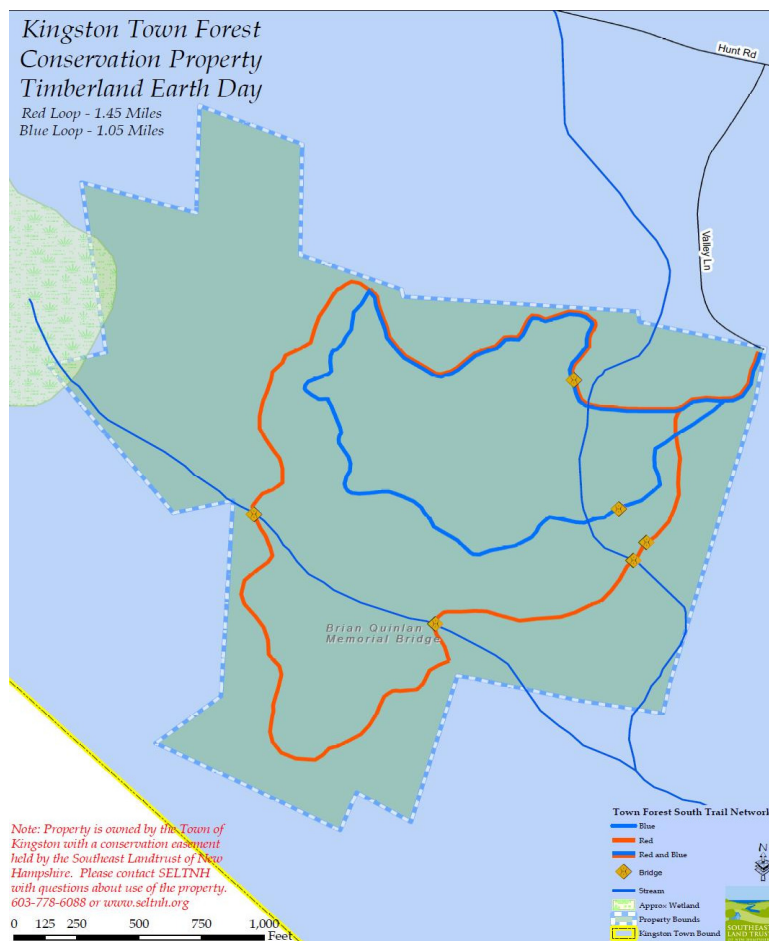
### Alternate Directions:

From Route 111, take Danville Road for approximately 8/10<sup>th</sup> of a mile to Long Pond Road. Take a right onto Long Pond and follow it for approximately 1.6 miles to a right onto Rockrimmon Road. Rockrimmon becomes Ruby Road. At the end of Ruby Road take a right onto Emerald Drive and follow for approximately 9/10<sup>th</sup> of a mile to its intersection with Opal Drive. You'll see a dirt road heading into the woods. Park on the side of the road and follow the woods road for several hundred yards. The trailhead will be on your right at a semi-circular parking area. There is a sign on the trailhead.

## **South Kingston Forest (Valley Lane Town Forest)**

A town forest located off of Valley Road has been the focus of the Kingston Conservation Commission's forest land efforts for the past few years. The beautiful 104.88 acre forest is covered with forest vegetation that impacts many other natural resources, including wild birds, animals, a seasonal waterfall, soils and water. The development of this property for education and recreation is closely dependent on an improvement harvest, done in 1998. A trail system highlights the streams, rocky ridges, swamps, trees of up to 39" diameter, and untouched acreage for deer and wildlife. Local girl scouts identified flora throughout the forest and have provided a list that accompanies the trail map.

To hike the forest, proceed from Route 125 west onto Hunt Road and Valley Lane, for approximately 1.2 miles. Head south on Valley Lane approximately ¼ mile. At the end of Valley Lane, following the path to the west. Follow the blue ribbons. From Route 111, turn south on Route 121A and immediately turn left (east) onto Hunt Road. After approximately 1.8 miles turn right onto Valley Road and follow for approximately ¼ mile to the end. Park and follow the blue ribbons on foot. (No motorized vehicles are allowed on the trails)





## Southeast Land Trust of New Hampshire

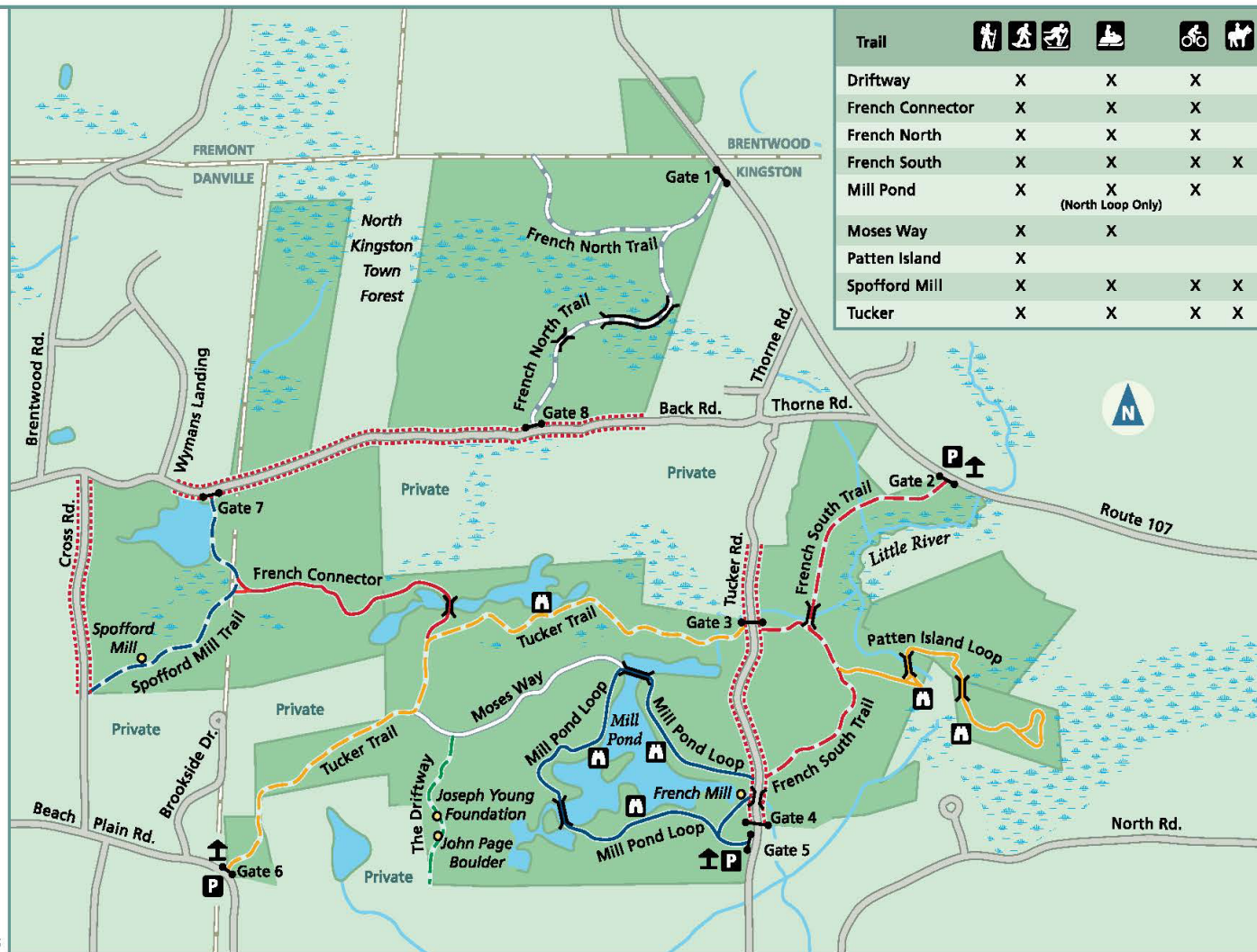
### Tucker & French Family Forest

Kingston & Danville  
589.44 acres

- Forest Boundaries
- Parking Area
- Kiosk
- Scenic View
- Foot Bridge
- Gate
- Point of Interest
- Trails
- Unmaintained Roads
- Public Roads
- Town Boundaries
- Water
- Wetlands
- Streams

Miles  
0 .125 .25

6/2015



Trail					
Driftway	X	X	X		
French Connector	X	X	X		
French North	X	X	X		
French South	X	X	X	X	X
Mill Pond	X	X	X		
				(North Loop Only)	
Moses Way	X	X			
Patten Island	X				
Spofford Mill	X	X	X	X	X
Tucker	X	X	X	X	X

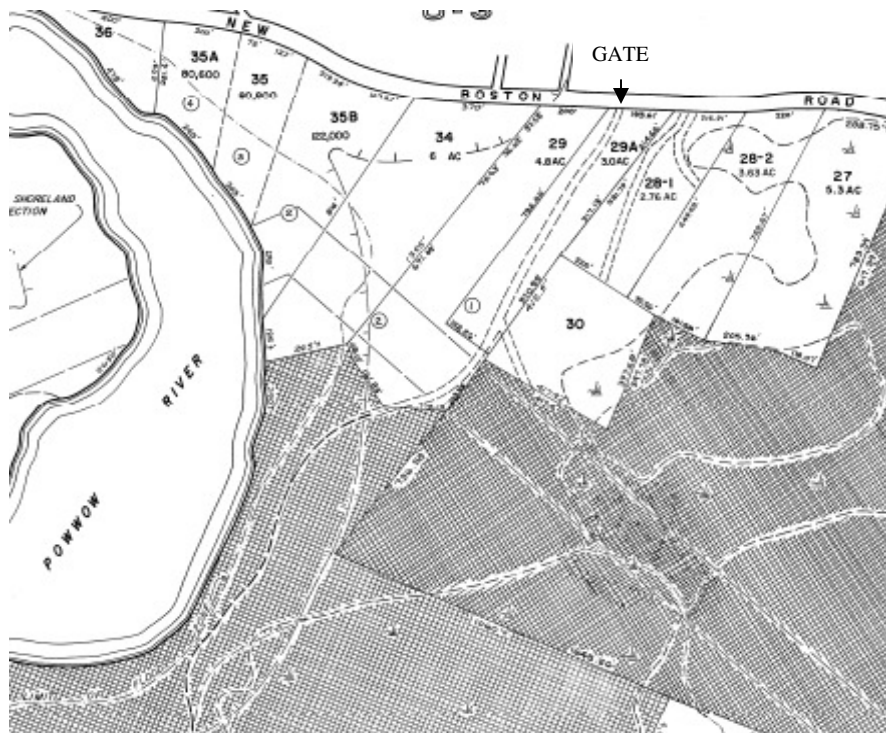


## **E. T.'s Landing**

This is an easy walk along a level woods road. Best done in fall or winter (with cross-country skis or snowshoes) and possibly in spring. Summer will bring its share of mosquitoes and deer flies.

From Route 125 heading north, take a right onto New Boston Road. From Route 125 going south, take a left onto New Boston Road. After 4/10<sup>th</sup> miles cross the Pow Wow River Bridge. At 8/10<sup>th</sup> mile you'll see a chain link gate on your right (between #'s 55 and 57 New Boston Road). Pull off the road and lock your car up. Walk around the gate and proceed in a southerly direction through the back yard of the house on your left. Across the yard you'll see a woods road disappear into the forest. Following the road until it crosses under the power lines. At the first fork go straight (not to the left) and continue on the most travelled portion of the woods road. There are numerous side trails for the curious, but remember to occasionally look behind you to see where you are before heading off to explore. Otherwise, continue approximately ½ mile from New Boston Road until you come to a rock monument about 3' high by 2' wide by 7" thick. You have reached E.T.'s Landing and its views of the great Pow Wow River Marsh. There also is the remains of an old foundation belonging to Bill Tucker, who lived on this beautiful spot for many years. During migratory season, plentiful waterfowl can be found.

The round trip walk is approximately a mile, or 15 minutes each way.



## **Sargent Property**

This 123-acre woodland parcel was purchased through partnership between the Town, the Nature Conservancy and the N. H. Fish and Game Department.

From the intersection of Route 125 and New Boston Road, head east on New Boston and follow toward Newton for approximately 1 mile to Sargent Road (on the right). An orange gate on Sargent Road marks the entrance to the Sargent Woodlands.

On this land some of the Granite State's rarest habitats, including the Atlantic White Cedar Swamp, a biologically diverse area of rare plants and animals (Hessels Harestreak butterflies, Blandings turtles, spotted turtles, oven birds, black throated blue warblers, brown creepers and other rare songbirds).

A compass is recommended as there are no marked trails, however, the land is contiguous to E.T.'s Landing, so if you refer to the enclosed information about that property, you'll be able to find the Pow Wow River and its spectacular views.





## Webster Wildlife and Natural Area

The Webster Wildlife and Natural area affords a beautiful walk through woods on marked trails, and is located alongside the Pow Wow River. To get there, follow Route 125 south through the lights at the intersection of 125/111 West. Take the next left at Folly Brook Terrace, then an immediate right onto Frontage Road. The next left will bring you onto Green Road. Follow for ½ mile then turn in to the dirt road, follow for around 200' and park near the sign for the Webster Wildlife and Natural Area. Enjoy!

