

Pollinator PATHWAYS *New Hampshire*



Restoring Habitat, One Yard at a Time

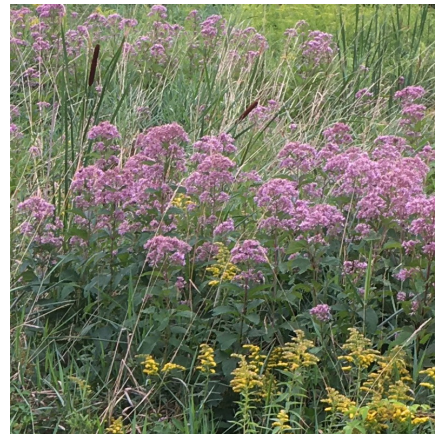
October 2020

Hello Everyone,

Well it's truly Fall. As I write this we are supposed to have 37 degrees for a night time temperature. In my veggie garden down in the hollow, that's probably 33 or 34 degrees. I guess I just have to bring in the green tomatoes and make some relish.

The native flowers are another story though. Many of them have been hard hit by the drought but many are still blooming. I wonder what I will see in the morning.

Anyone who has area that they grow as meadow has been struggling to figure out when they should cut the fields and long grasses. Well it's New England. It got cold and then it warmed up several times. The answer to the cutting question is different every year. It's dependent on the weather and with climate warming it gets later and later. Sometime in October is a safe guess. I'm certainly not an expert but we've had early snows in November.



I like to think that the warmer temperatures in the Fall let the pollinators find winter homes and gives them time to move in. Perennial plants often have hollow stems that are used as shelter. Many perennials have seeds that feed the birds. Just let them be what they are and tidy in the Spring. If there are some plants that you absolutely want to do something to then chop them about two feet above the ground. Leaf litter at the edge of lawns gives many tiny creatures safe winter homes. Leave the leaves! Rake/blow them off to the edge of the lawn. When leaves are bagged up and put into the land fill generations of pollinator creatures perish and are not around in the next year. Also a lot of good mulch is destroyed. Make a brush pile where it doesn't bother you to look at it. Brush pile branches and garden debris disappear in an amazingly short time. It turns into humus and rotting 'stuff'. Bugs and pollinators love the 'stuff' in the brush pile.

When you think about all the Fall chores around the gardens, lawns, flower pots and meadows...it really is planning for Spring. Somehow Planning for Spring sounds like a lot more fun than taking things apart because it's Fall. I like to think that I'm tucking in my garden for the cold weather. I'm already dreaming about what I might change or fix. I'm already seeing Spring in my mind's eye. I'm already seeing the butterflies and the hummingbirds and all the pollinators in my mind. So I need to fix up their winter homes.

<https://content.yardmap.org/learn/wildlife-value-of-a-messy-garden/>

Dreaming about the Spring also starts now. Many of the native plants and flowers need to be planted now (or seeds can be kept in your refrigerator for the winter).

With that in mind...

Pollinator Pathways NH is hosting a SEED EVENT on Saturday Oct 17th 1-3pm .

It will be held at the Kingston,NH Recreation Center- 24 Main St.

There will be a variety of native flower and plant seeds to choose from, learn about and bring home. It's one of the events where people think and plan for Spring! We will be keeping to the Covid rules and require masks and social distancing. It will be safe but it will be fun.



Pollinator Pathways was developed as a Do It Yourself project for gardeners and landowners. The idea that we can add to pollinators habitat is the basic foundation of this program. Everyone from the person with a few pots on their deck to the farmer with acres and acres makes a difference. Together we can all build habitat for these small creatures. We have Pollinator Pathways NH partners across Rockingham county who are doing great programs to help pollinators.



Ongoing Partner Projects

- Atkinson CC cold stratifying milkweed seed for a seed exchange in the spring.
- Atkinson CC is also working with the Atkinson Garden Club to plan a pollinator garden
- Freshwater Farms will sponsor a seed exchange event in Atkinson in the spring
- Raymond is creating a Monarch Waystation
- Hampton has several public pollinator gardens

- Exeter has 2 Monarch Waystations
- Kingston has 2 Monarch Waystations
- East Kingston has 1 Monarch Waystation
- Newton had a senior housing pollinator plant give-away
- New Castle hopes to plan a Monarch Waystation



* Monarch Waystations are places that provide resources necessary for monarchs to produce successive generations and sustain their migration.

*Anyone can join the Monarch Waystation project.
For more information on Monarch Waystations go to:
monarchwatch.org/

If you would like a Pollinator Pathways NH yard sign.
Call Fast Signs in Plaistow, NH - 603-894-7446.
Signs are \$14 each - You can order one or more than one
Fast Signs accepts credit cards and will ship.

Have a great Fall !

Marghi Bean
Pollinator Pathways NH

