



January 15, 2024

Hello Everyone,

Yesterday we had several mini-blizzards. I hope you are all OK. We were warned ...Was anyone concerned?... I would bet that most of us just thought "Good old New England, so what!" Well, I think we learned a lesson. When you can't see your garage because of the horizontal snow blowing at 20-30 mph - it's time to pay attention.

For me Spring can't come fast enough. I'm in a brand new house that needs total landscaping and right now I can't do a thing. They say that gardeners are patient and have faith. I'm just going to have to be patient. Not my strong suit. But I can plant in pots and have faith.

When I'm setting up a letter I usually go through old files looking for things that weren't dealt with well enough or have changed with time. This month I found an interesting file.

The very first time we advertised PPNH was at voting in Nov. 2018. Evy and I had a table and put out information for PPNH and also for Conservation. People were interested and we had about 30 people sign up for an email letter.



Looking through the files I found the following list that is dated about a year later. All the information is still current. All of the ideas are still valid and the first item on the list is still very important.

- If I do nothing what will happen?
- 

We are talking about pollinators (and others) at risk of extinction. The dictionary says 'Resilience is the capacity to withstand or to recover quickly from difficulties; toughness.-

Restoring habitat - one yard at a time - helps build resilience for pollinators and for our ecosystem.

So...Food For Thought for all of you.

I'd love to hear from you and hear your thoughts and ideas on this subject.

Marghi3maples@gmail.com



This is the list of ideas that I found  
(9-27-19) Pollinator Pathways

**- food for thought-**

\* what can I learn beyond back yard Woolly Bears?

\*Native Plants

\*MONARCHS: It takes 4 generations to get to Mexico

One generation reaches Texas from Mexico— two generations are here starting in early May  
Second and Third generation are here during the summer- they lay many eggs.

It's the fourth generation that treks back to Mexico

Am I helping the monarchs? What help do they need?

\*Why plan to plant native flowers so blooms stretch from Spring until Fall?

\*MOWING: mow different sections of lawns /fields at different times –spread it out

Pollinator meadows -- mow 1x a year

MOW before May 1 and after Oct 1-There are many creatures using that field all summer.

\*When buying plants and seeds – check to make sure they are insecticide free  
Why are big box stores a bad resource for plants?

\*Town things –

We need to get input from town people as to what they would like to see in their town.

How do you get your town on board with saving pollinators and habitat?

Use local conservation success stories to spread the information and get people working toward  
success - talk to/at the individual level.

Talk with surrounding towns about connecting green space and forests.

\* If I do nothing what will happen?

We have two interesting presentations lined up to enliven the winter

## Abenaki Medicinal Use of Local Pollinator Plants

*Plants make chemicals to protect themselves from bacteria, fungi, and UV damage.*

*Because of this, many common plants can be used to treat animal and human diseases.*

*This talk will focus on how some of our native plant pollinator species were used as medicine by local indigenous peoples.*



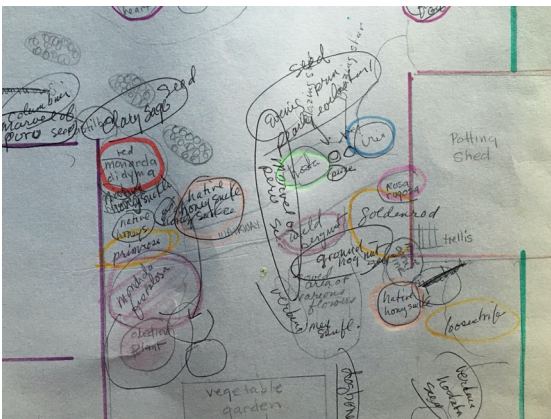
*Our presenter:*

*Dr. Vicki Motz has been teaching human physiology and human anatomy for 40 years, and has taught courses in pathophysiology and medicinal herbalism.*

**Kingston Community Library, February 10, 10:00- 12:00 AM  
Snow date: Feb. 17**

We are very lucky that Vicki Motz has moved to NH. She is the tops in her field and is amazing. This is a 'do not miss' event.

## ~~~~~ PLANNING FOR PLANTING March 16<sup>th</sup> 10am



Draw a sketch of your garden!

(if you don't have one we'll provide pencil and paper)  
Join us at the Kingston Community Library on the morning of March 16 (snow date March 23) at 10:00 for a walk-through of important points for planning a pollinator garden.

This will be followed by a working session. Think-tank your design with Patty and others for your four season garden.

Patty Davidson has been practicing ecological landscaping since 1994. She earned a horticulture degree from the University of New Hampshire School of Applied Science, and is a New Hampshire Certified Landscape Professional (NHCLP) and an Accredited Organic Land Care Professional (AOLCP).



Take advantage of KCL's Seed Library while you're there.  
Home-made refreshments, coffee and tea will be offered, as always



I would like to highlight a website, or two in each letter. Xerces Society has always been tops on my list but there are many good websites for information about Northeast native plants and pollinators

**<https://www.xerces.org/>**

is a wonderful website

There is information on all things invertebrate.

The native plant lists that they have are excellent and easy to use

<https://xerces.org/pollinator-conservation/pollinator-friendly-plant-lists>

<https://extension.unh.edu/agriculture-gardens/yard-garden/pollinator-habitat>

UNH Extension is an amazing website. It is big enough to get lost in.

This part of the website will start you with pollinators -- explore from there.

Think Spring!



<https://www.kingstonnh.org/conservation-commission/pages/pollinator-pathways>

<https://www.facebook.com/pollinatorpathwaysnh/>