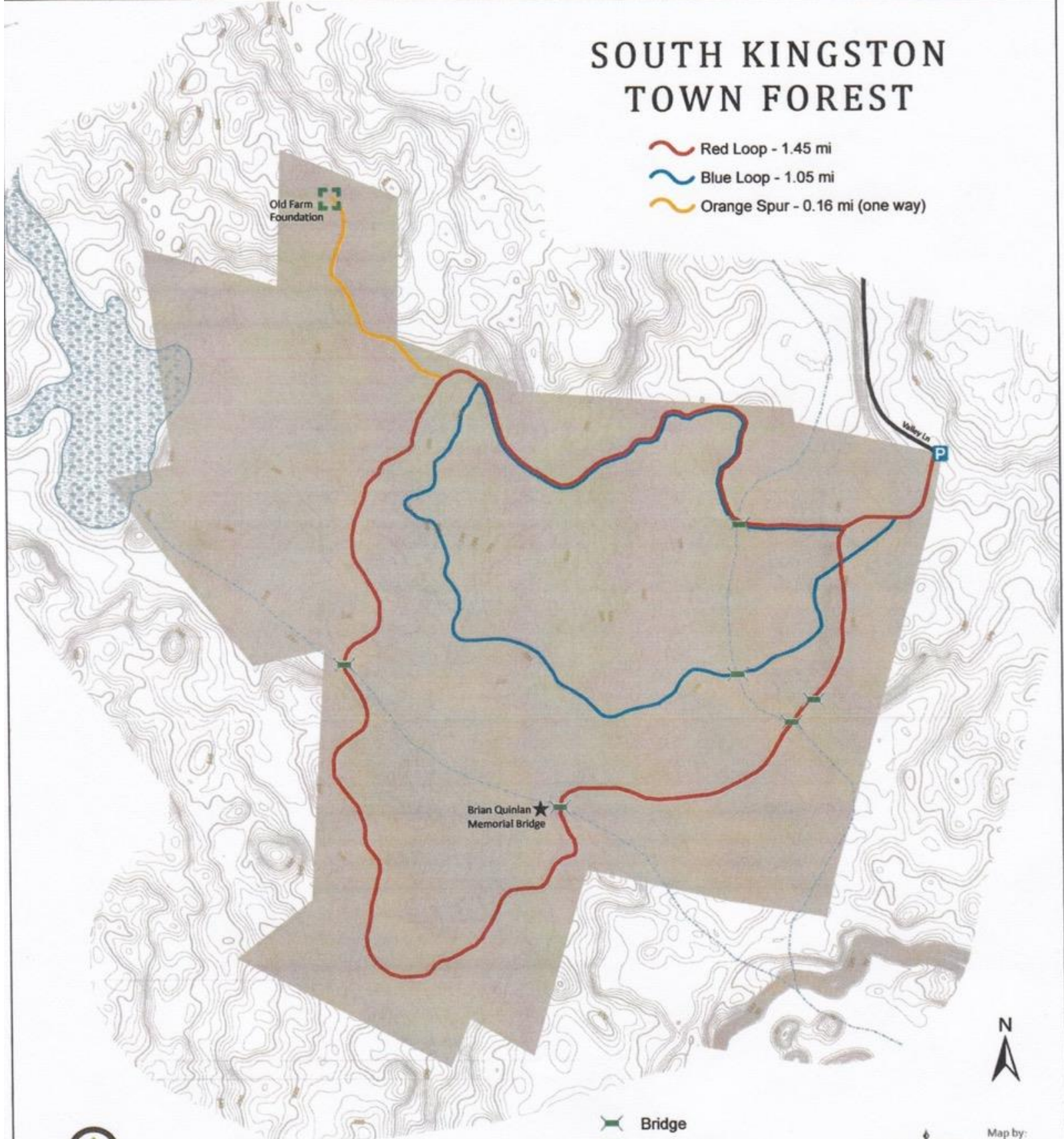


SOUTH KINGSTON TOWN FOREST

- Red Loop - 1.45 mi
- Blue Loop - 1.05 mi
- Orange Spur - 0.16 mi (one way)



Brian Quinlan
Memorial Bridge

Old Farm
Foundation

Valley Ln
P



Note: Property is owned by the Town of Kingston with a conservation easement held by the Southeast Land Trust of New Hampshire. Please contact SELT with questions about use of the property, 603-778-6088 or www.selnh.org.

- Bridge
- Foundation
- Passport Rubbing Station
- Wetland
- Intermittent Stream

Map by:
NEATL NE ASSOCIATES
www.nhgis.com
August 2016

0 Feet 500