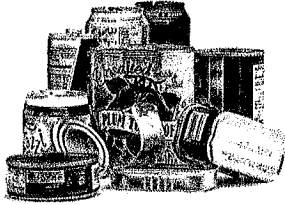
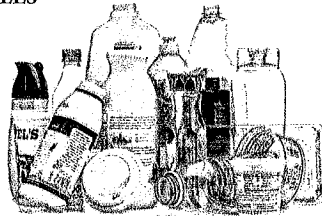


RECYCLABLE CONTAINERS MUST BE EMPTY AND DRY; NO LIQUID OR FOOD WASTE RESIDUE PERMITTED; NO BAGGED RECYCLABLES



Steel, Tin & Aluminum Cans

Latas de acero, hojalata y aluminio



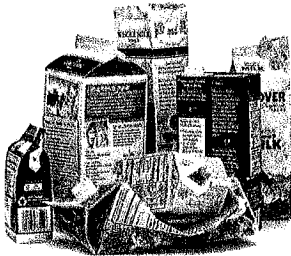
Plastic Bottles & Containers #1, #2 & #5

Botellas y envases de plástico



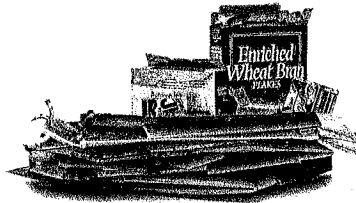
Office Paper, Brown Paper Bags, Newspaper, Magazines & Junk Mail

Bolsas de papel marrón, papeles de oficina no confidenciales, periódicos, revistas, correspondencia no solicitada



Paper Cardboard Dairy & Juice Containers

Envases de papel cartón, productos lácteos y jugos



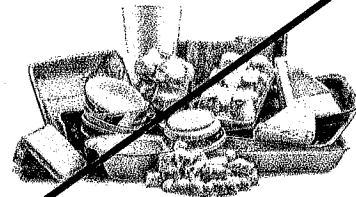
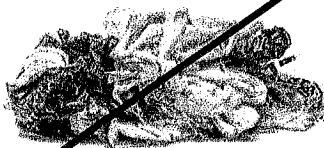
Flattened Cardboard & Paperboard

Cartón y cartulina aplastados



Glass Bottles & Jars

Botellas y frascos de vidrio



DO NOT INCLUDE: Plastic bags, recyclables bagged in plastic bags, food waste or polystyrene foam/plastics #6 and other plastics #3, #4 & #7

NO INCLUYA: Comida desechada, bolsas de plástico o vasos y contenedores de goma de poliestireno

For a complete list of accepted recyclable materials, please visit: <http://RecycleOftenRecycleRight.com>

Single-Stream Recycling

Reciclaje de corriente única

